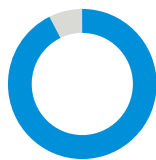


One small business partner. A world of opportunity.

You deserve a trusted carrier partner that is easy to do business with. MetLife's new offering brings you a suite of best in class benefits built for small businesses combined with an enhanced servicing experience.



What you can expect from an industry leader in small business solutions:



90%+

Cases implemented
in <7 business days



95%+

Response rate
within 1 business day



A broad set of affordable benefit solutions

- A wide range of industry-leading benefits, designed for small businesses
- Even more coverage with Accident, Critical Illness-Attained Age, and Hospital Indemnity for groups with 10–99 employees
- Easy-to-understand bundles with savings and discounts¹
- Bundles include extended rate guarantees that lock in pricing for 3 years
- Customized bundles with Dental + one or more of our small business benefits
- Discounts (up to 5%) for employers on Dental, Life, Disability and Vision premiums



Designed for the ease of doing business

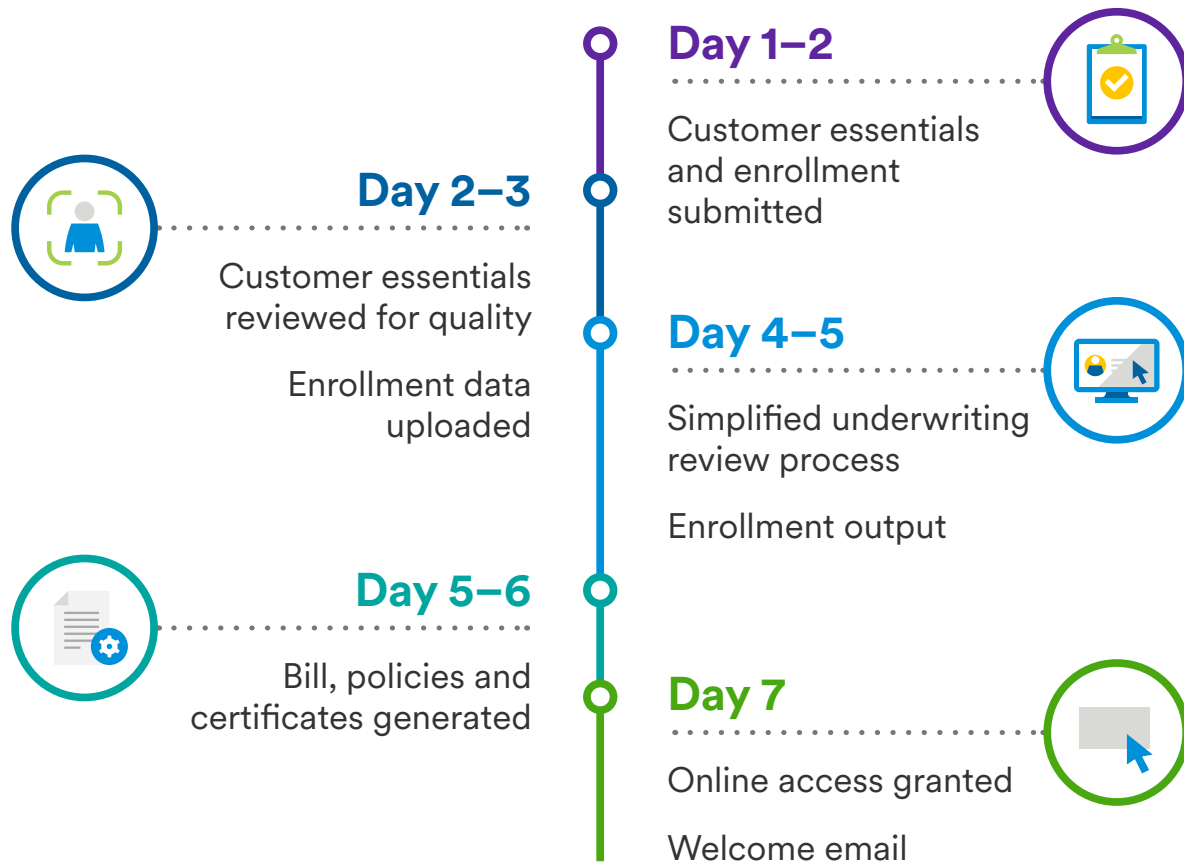
- Case implementation to claim ready in less than 7 days^{*}
- A team of SBS Consultants supporting all your administrative needs for an end-to-end service experience
- New self-service portal with 24/7 online access to view claims, pay your bill, and make eligibility changes/updates



A group benefits leader you can count on

- Expertise and guidance from a global leader in non-medical group benefits
- Peace of mind from our legacy of financial stability and dependability, trusted by 35K+ small business² customers
- Experienced track record in Accident & Health, covering more than 5 million employees³

Claims ready in less than 7 days*:



Experience our new small business portfolio and unlock a world of opportunity.
Talk to your MetLife Representative Today.

1. Subject to regulatory approval. Not available in all states.
2. Businesses under 500 lives.
3. Based on MetLife internal analysis.

*All days are business days and begin once case is received in good order. This is a non-peak season view, timing may be extended during peak business.

