



Coastal Payroll is a leading provider of fully outsourced human capital management (HCM) solutions. We're the human alternative to other national payroll and workforce management providers, focusing on exceptional customer service and real-time interfacing with people.



WHAT IS THE COASTAL PAYROLL PHILOSOPHY?

Our number one goal is to have a positive impact on the lives of those around us. We accomplish this by never wavering from our values and always seeking to be better tomorrow than we are today.

We have the resources, technology and tools to ease the burden of workforce management for employers. As this burden grows with increased regulations and changing workforce environments, we're constantly innovating and growing our capabilities.

COASTAL PAYROLL PROVIDES YOUR MUST-HAVES IN A SINGLE SOLUTION.



ONBOARDING

Hire the right people and bring them on board



TIME

Collect, manage and schedule time



PAYROLL

Technology, integrations, and delivery



BENEFITS

Delivery and administration



HR

Custom and partnered solutions

WHAT IS THE COASTAL PAYROLL DIFFERENCE?

UNPARALLELED SERVICE

Service is everything to us, because we know it's everything to you. Our clients aren't just another number; they're people with specific needs and business goals.

DEDICATED HCM SPECIALISTS

All our clients have a dedicated Client Support Specialist on our Client Support Team who they can contact directly with their concerns.

NO AUTO-ATTENDANT POLICY

Our No Auto-Attendant Policy means when you call our office, you'll always be greeted by one of our team members. This allows us to address client needs as quickly as possible.

RELIABLE FROM COAST TO COAST

We started in San Diego and call California home. Even if you're based elsewhere, you receive the same level of attention and care as if you were next door.

THE COASTAL DIFFERENCE



OUR NET PROMOTER SCORE

Our NPS is consistently off the charts, year after year. We know it matters, as a reflection of how well we are serving our clients and meeting their needs.



A SINGLE ACCESS POINT

Everything you need to manage the entire lifecycle of your employees is accessible from one innovative system, in the cloud. No multiple logins; no exporting or importing.



COMPLETE REPORTING ENABLED

With isolved's reports, you can easily determine employee types, hours worked, full-time status and more to confirm compliance.

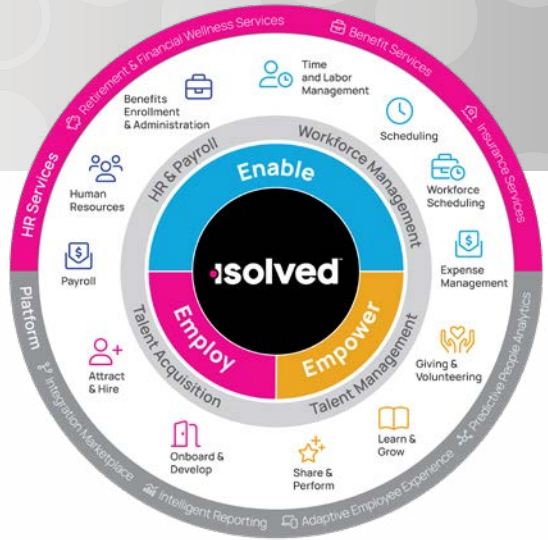


SEAMLESS TRANSITION FROM HIRE TO RETIRE

Attract and screen candidates and move new hires automatically through onboarding. Our retirement plan integration sets up your employees for a lifetime of success with you.

TRANSFORM THE WAY YOU MANAGE WHAT MATTERS MOST • YOUR PEOPLE!

We put people first and want to help you do that, too. Our technology provides you with a unified solution for HR, talent acquisition, onboarding, payroll, benefits, time and attendance, and ACA reporting. One login, accessible anywhere, anytime, means it's there when you need it. Check your full payroll preview, view the Executive Dashboard, create a job posting or prepare a performance review. isolved is flexible and intuitive - providing the data you need to make more informed business decisions and drive employee engagement.



isolved People Cloud Checklist

isolved People Cloud Checklist isolved People Cloud is an intelligently connected human capital management system that enables HR teams to manage the employee journey across talent management, HR & payroll, benefits, workforce management and engagement management functions. Does your current HR/HCM software offer all that we can deliver? Use this checklist to find out.

Talent Acquisition

Attract & Hire		Onboard & Develop
Recruiting	Interview guides	Custom messaging
Requisition process	Skills test	Fillable forms
Job ad writing	Video interviews	Employee acknowledgements
Job questions	Calendar integration	Custom links
Auto disqualify	Offer letters	Compliance
Job posting	Reference checks	Workflow automation
Company career page	Background checks/ drug screening	Pending employee dashboard
Employee referrals	Custom tags	Configurable onboarding & offboarding
Text to apply	Reports/dashboards/analytics	e-Verify
Job alerts	Candidate ranking	WOTC
Assessments		

HR & Payroll

Payroll	Human Resources	Benefits Enrollment & Administration
Employee self-service	Salary and job history	Deferred comp (401k, 403b, etc.)
Direct deposit	Certification tracking	1094/1095c production
Pay cards	Skills, education and training tracking	Accrual management
Garnishments	Audit and compliance	Benefit cost analysis
Labor and general ledger (GL)	Document management	ACA compliance
Percent distribution		COBRA management
Local, state, and federal tax filing		Benefit management (open enrollment)
Quarterly and year-end filing (W-2)		Life events
		FSA, HRA, transit, parking, tuition, and lifestyle
		HSA
		Carrier connections

Workforce Management

Time & Labor Management

- Time tracking
- Shift configuration
- Assign shifts
- Default/pattern scheduling
- Alerts
- Time off requests
- Adjustments
- Meal & break configuration
- Rounding rules
- Holidays
- Verification workflow
- Punch notes/attestation
- Occurrence tracking

Scheduling

- Configurable allocation rules
- Job tracking
- PBJ reporting
- Reporting/dashboards/analytics
- Team calendar
- Schedule notifications
- Geofencing
- Time clocks/virtual clock
- Mobile punching
- Group punching
- Submit missing punch

- Shift eligibility
- Auto hour labor allocations
- On call shifts
- Scheduler alerts
- Shift request/coverage request/shift swap
- Coverage dashboard
- Employee unavailability

Workforce Scheduling

- Staff count types
- Staffing rules
- Staffing summary
- Schedule by shift
- Open shifts
- Notifications to fill open shifts

Expense Management

- Expense tracking
- Employee entry
- Delegate entry
- Admin entry
- Payroll reimbursement
- Copy expense
- Business purpose tracking
- Mileage tracking/calculations
- Per diem tracking/calculations
- Customizable fields
- Customizable business purpose types
- Multiple policy tracking

- Multi-level approval processing
- Email alerts
- Expense limit notifications
- Non reimbursible expense tracking
- IRS category tracking
- Expense importing
- Reporting/dashboards/analytics
- Optical character recognition (OCR)

Talent Management

Share & Perform	Learn & Grow	Giving & Volunteering
<ul style="list-style-type: none"> Employee surveys Collaboration Rewards and recognition Goal setting Performance reviews 360 review 9-box Feedback Intranet Employee portal 	<ul style="list-style-type: none"> LMS SCORM compliant Content marketplace Social learning Gamification Training identification and nurturing 	<ul style="list-style-type: none"> Company match Volunteer Automated payroll donations

Platform

Conversational Virtual Assistant	Predictive People Analytics	Employee Marketplace
<ul style="list-style-type: none"> Real-time access to HR info Microsoft teams chat integration Artificial intelligence-based natural language processing 	<ul style="list-style-type: none"> Centralized analytics dashboards Predictive modeling Historical trend analysis Key events overlay Voice navigation and Virtual Assistant Artificial Intelligence 	<ul style="list-style-type: none"> Exclusive Perks and Discounts at no cost, including: <ul style="list-style-type: none"> Travel-related purchases Events Dining and wellness access Electronics Retail and apparel
Adaptive Employee Experience	Intelligent Reporting	
<ul style="list-style-type: none"> Any device/anywhere/anytime Employee self service Manager/supervisor self Service 	<ul style="list-style-type: none"> On-demand reports Report writer 	

Missing some features or want to learn more about how isolved People Cloud can meet your HR needs? Contact us at 858.565.2123 or visit coastalpayroll.com today.